

How To Install Your LCD Screen

iPod 4th Gen



PLEASE PRINT OUT A COPY OF THE MANUAL BEFORE INSTALLATION

For Customer Service and Technical Support
email: support6@fastmac.com or phone: 408.850.6232



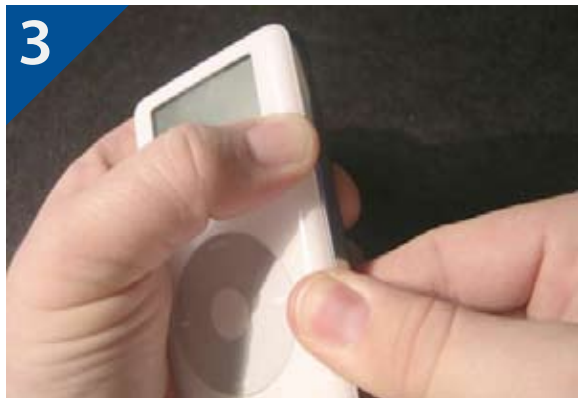
Thank you for choosing FastMac. Please feel free to contact us at any time with any questions or comments you may have while installing your LCD Screen. Let's begin.



1. Lay out the tools provide in the packaging.



2. Press and hold the play/pause button to place the iPod in sleep mode. Locate the hold switch on top of the iPod and turn to the on (orange) position.



3. Begin by holding the iPod in your left hand. While pressing down with your thumbs, pull the bottom case firmly to the opposite direction. This will cause a slight gap to appear between the metal backing and the acrylic top case.



4. Insert the edge of the larger tool into the gap you've created.



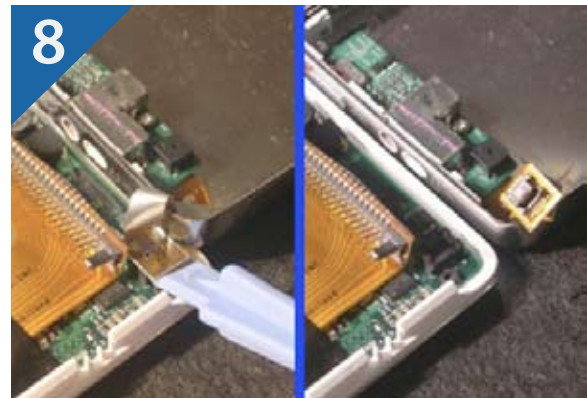
5. Slowly work your way around the edges of the iPod while pressing in slightly. You may also twist the tool as you work your way around to release the tabs. Be careful when using the plastic tool around the top and bottom of the iPod. These areas contact very delicate components.



6. Carefully lay the backing over as shown. Be aware that there is a ribbon cable still attached.

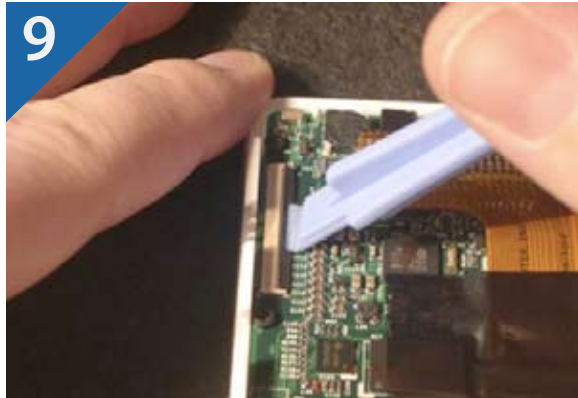


7. Locate the hard drive. While holding the cable with your thumb, carefully wiggle the hard drive loose. Do not pull to one side only. Set the drive aside.



8. Locate the connector for the back case's headphone board. Using the nylon tool, carefully wiggle the connector loose. Take your time, as this is a very delicate connector. Once the cable is disconnected, set the back case aside.

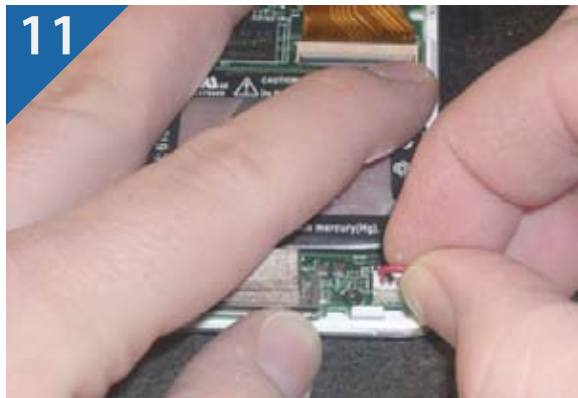
Stage 3: Removing Screws



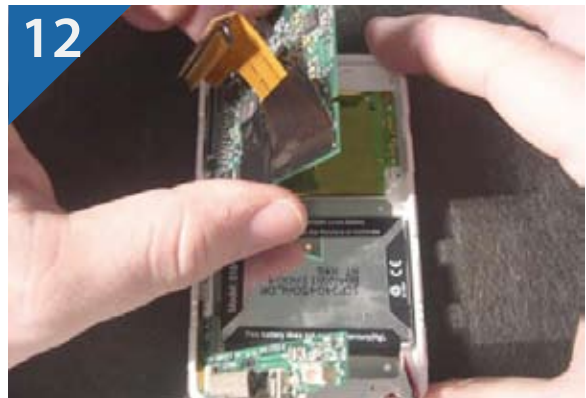
9. Locate the LCD connector to the left. Insert the nylon tool and gently lift up the lever.



10. Remove the five screws shown in the picture. Screws #4 is located underneath the EMI tape. You will have to gently peel back the hard drive connector and tape to reveal it. Leave the screw closest to the battery connector attached, so you may remove the cable without breaking the logic board.



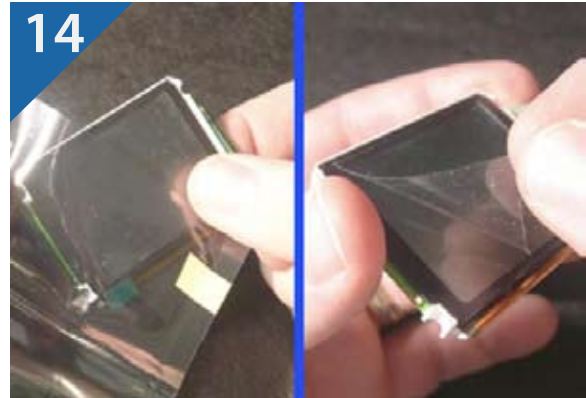
11. Disconnect the battery cable. Remove the final screw.



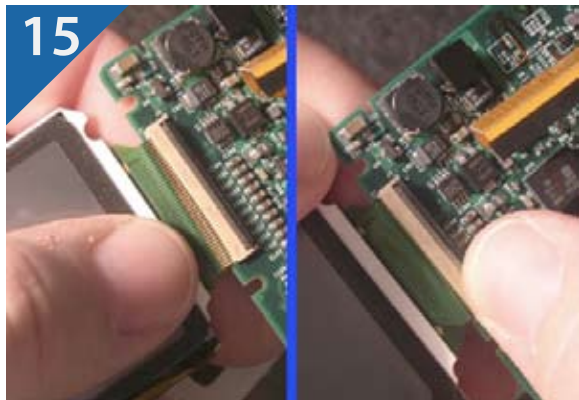
12. Carefully lay the logic board over as shown,



13. Locate the LCD module. Gently lift it up and tuck it underneath the logic board, while laying it back over. Carefully disconnect the LCD cable by gently wiggling it. Set the old LCD aside.



14. Remove the new LCD from it's packaging. Peel off the protective sheeting.



15. Carefully insert the new LCD as shown. Be sure and insert evenly, not at an angle like this guy did. Lock the lever down.



16. Lay the logic board back over and insert the LCD into place.



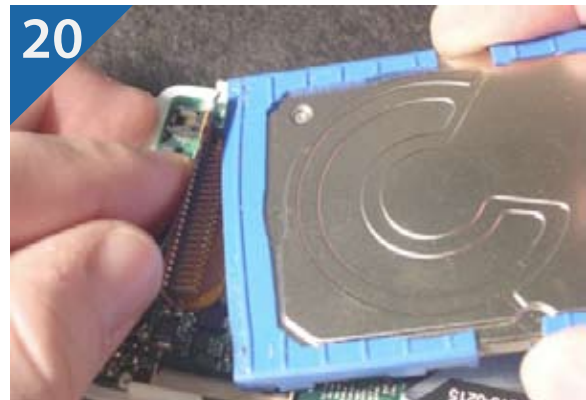
17. Place the logic back into its original position. Begin reattaching the screws, starting with the one next to the battery cable.



18. Reattach the battery cable. Make sure you tuck the wires around the white tab so they don't protrude.



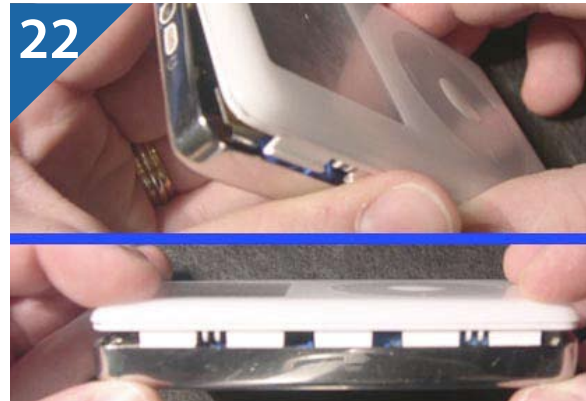
19. Reattach the remaining screws. Don't forget you must pull back the tape and hard drive cable to reveal one of the screw holes.



20. Reattach the hard drive as shown, beginning with the plastic key and the rocking it into position. This ensures you don't miss any pins.



21. Reattach the back case as shown



22. Begin carefully, but firmly re-seating the metal backing by pressing down on the edges of the iPod. **DO NOT PRESS DOWN ON THE MIDDLE OR NEAR THE CENTER. THIS CAN CAUSE PERMANENT DAMAGE TO THE HARD DRIVE!**



23. Turn the hold switch to the off position.



24. Press the play/pause button and/or the center select button to turn your iPod back on. You're done!



Final Stage: Job Complete and Enjoy!

Thank You For Choosing FastMac.

iPod 4th Gen



Visit FastMac.com For More Products!