

How To Install Your iPod Video Battery

iPod Video



PLEASE PRINT OUT A COPY OF THE MANUAL BEFORE INSTALLATION

For Customer Service and Technical Support
email: support@fastmac.com or phone: 408.850.6232





Stage 1: Setting Up Removal

Thank you for choosing FastMac. If you need any further assistance installing your new iPod video battery, feel free to contact us through email support@fastmac.com or by phone (408) 850-6232.



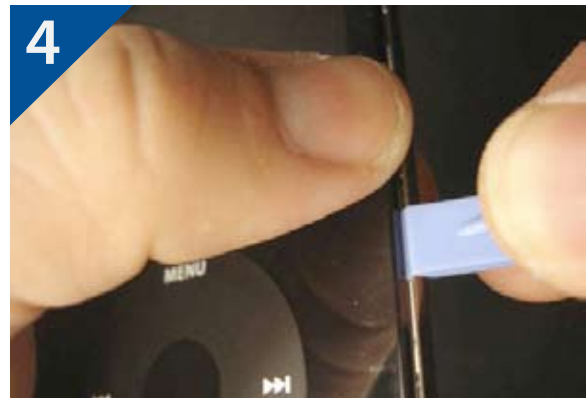
1. Lay out the tools provided in the packaging.



2. Press and hold the play/pause button to place the iPod in sleep mode. Locate the hold switch on top of the iPod and turn to the on (orange) position.



3. Begin by holding the iPod in your left hand. While pressing down with your thumbs, pull the bottom case firmly to the opposite direction. This will cause a slight gap to appear between the metal backing and the acrylic top case.



4. Insert the edge of the larger tool into the gap you've created.

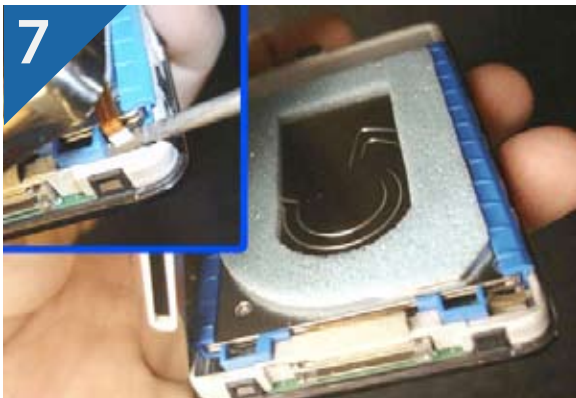
Stage 2: Removing Old Battery



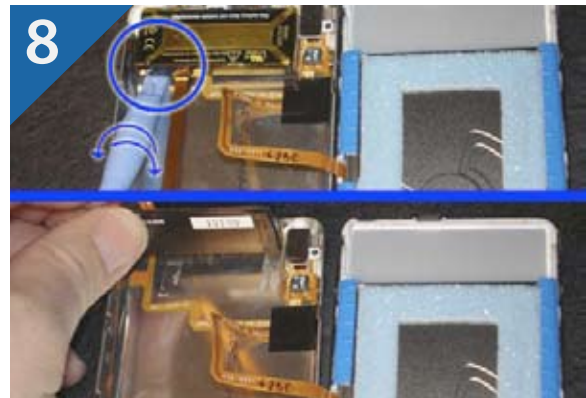
5. Using your thumb as an anchor, slowly work your way around the edges of the iPod while pressing in slightly.



6. Be careful when using the plastic tool around the top and bottom of the iPod. These areas contact very delicate components.



7. Once the backing has been released, turn the iPod over and very gently lift up on the right hand side to reveal the battery connector. Using a flat-bladed screwdriver (not included), carefully lift the locking ring slightly to disconnect the battery ribbon cable.

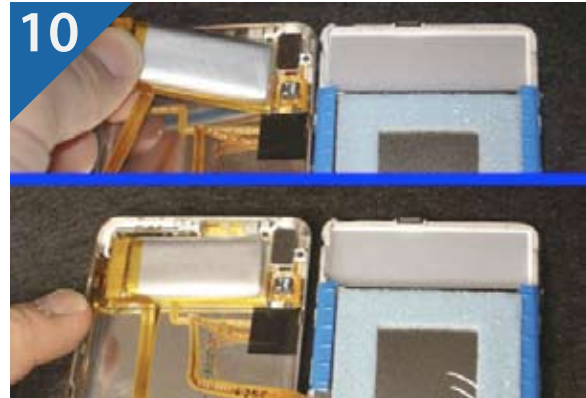


8. Lay the backing over and set the iPod down. Be careful! There is still another ribbon cable attached! Locate the battery and insert the smaller plastic tool underneath and slightly twist to dislodge the battery from the adhesive.

Stage 3: Inserting New Battery



9. Remove the new battery from the packaging.



10. Orient the battery as shown in the picture and press down gently.



11. Carefully place the metal backing over the iPod and re-insert the battery ribbon cable. Be sure and lock the connector down.



12. Begin carefully, but firmly re-seating the metal backing by pressing down on the edges of the iPod. **DO NOT PRESS DOWN ON THE MIDDLE OR NEAR THE CENTER. THIS CAN CAUSE PERMANENT DAMAGE TO THE HARD DRIVE!**



13. Work your way around the entire iPod to ensure there are no gaps.



14. Turn the hold switch off and power on the iPod.. You might need to charge the iPod before it will power on. In this case, plug in the USB 2.0 cable to charge. Your done!



Stage 7: Job Complete and Enjoy!

Thank You For Choosing FastMac.

iPod Video



Visit FastMac.com For More Products!