

How To Install Your LCD Screen

iPod Mini



PLEASE PRINT OUT A COPY OF THE MANUAL BEFORE INSTALLATION

For Customer Service and Technical Support
email: support6@fastmac.com or phone: 408.850.6232



Thank you for choosing FastMac. Please feel free to contact us at any time with any questions or comments you may have while installing your LCD Screen. Let's begin.



1. Lay out the tools provide in the packaging.



2. Press and hold the play/pause button to place the iPod in sleep mode. Locate the hold switch on top of the iPod and turn to the on (orange) position.



3. Using a razor blade, carefully insert the tip between the white plastic and the metal casing of the iPod.



4. Slowly lower the blade into the crevice and carefully pry away from you.

Stage 2: Removing Top & Bottom



5. You will see the adhesive begin to separate. Slowly work your way around the edges, prying up gently as you go.



6. Remove the top cover w/ hold switch and set aside.



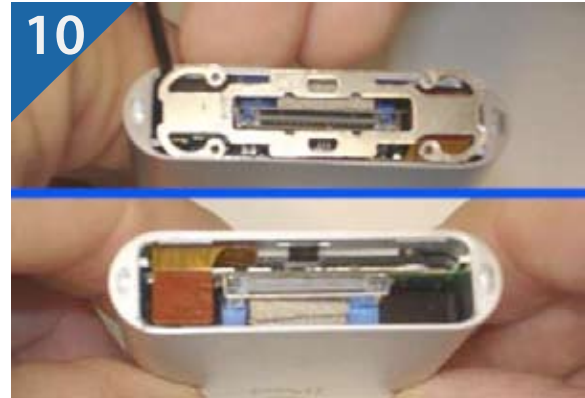
7. Locate the two small Philips screws, remove them and set them aside.



8. Turn the iPod over and repeat step 3.



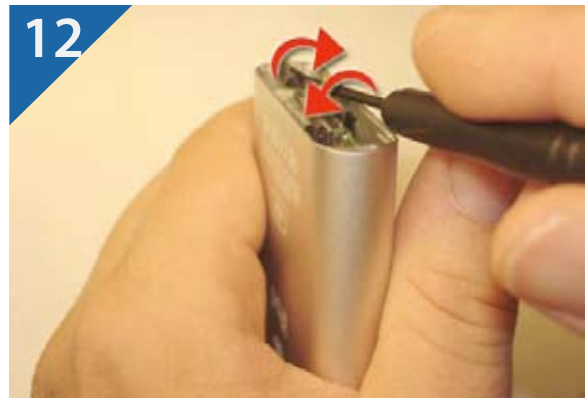
9. Locate the metal bracket inside the housing. Carefully insert the flat-head screwdriver into the upper right hand corner and pry down gently. The bracket should disengage from the grooved rail inside.



10. Repeat step 9 on the other side. The bracket should now come out easily.



11. Locate the trackpad ribbon cable on the left side. (BE EXTREMELY CAREFUL WHEN DISCONNECTING THIS CABLE!!!).



12. Insert the flat-head screwdriver between the two connections of the ribbon cable (NOT THE RIBBON ITSELF). In a twisting motion, turn the screwdriver left and right gently. Work the connector out in this fashion. (BE PATIENT).

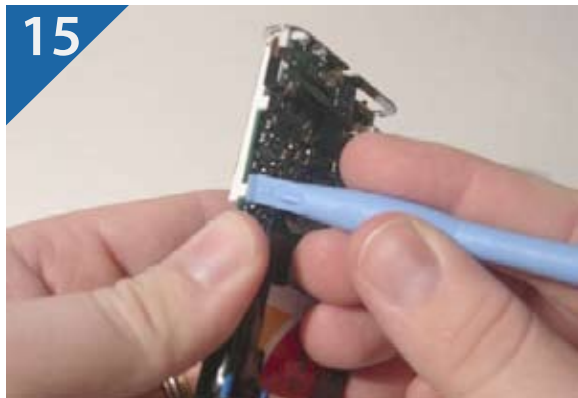
Stage 4: Removing Old LCD Screen



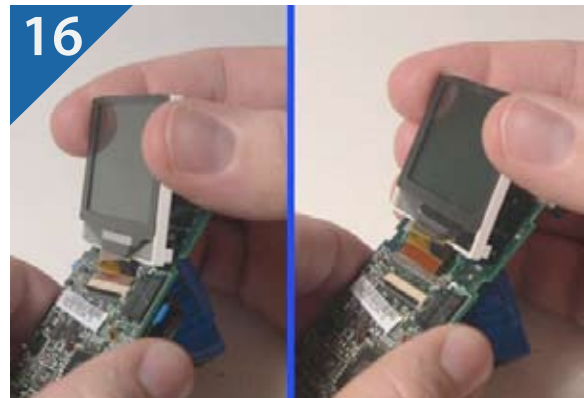
13. Once disconnected, push the internal chassis forward, away from the ribbon cable.



14. Locate the LCD ribbon cable connector. Using the rounded pry tool, lift up on the connector.

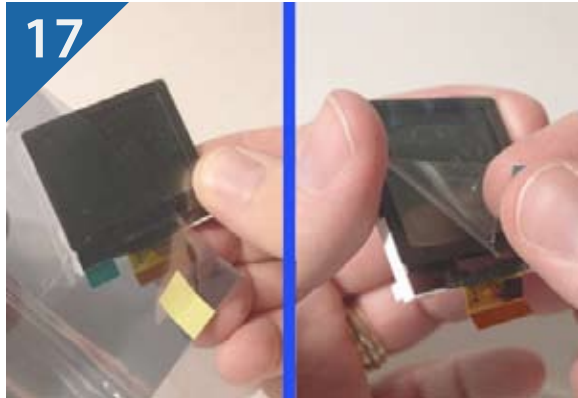


15. Turn the iPod over and locate the white tabs for the LCD. Carefully pry one of the tabs away from the logic board using the rounded pry tool. Do the same on the other tab on the same side you are working on.

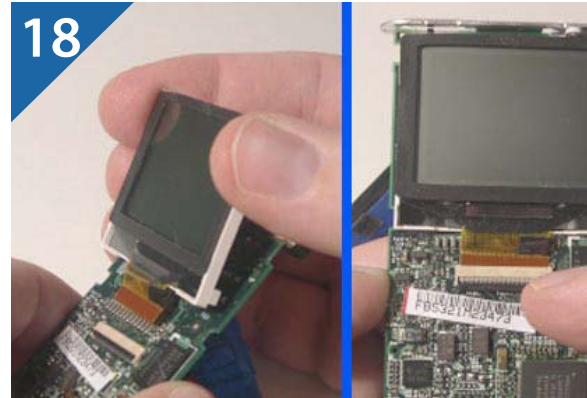


16. Lift the LCD carefully away from the logic board and remove it. Set it aside. If you have trouble removing the LCD, ensure you have released the ribbon cable locking connector.

Stage 5: Inserting New LCD Screen



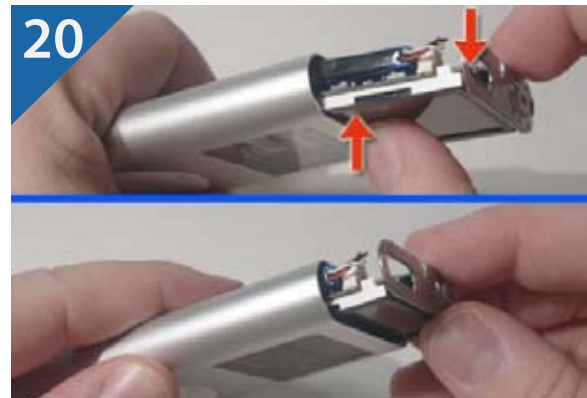
17. Remove the new LCD from it's packaging. Then remove the protective sheeting.



18. Carefully insert the new LCD's ribbon cable into the connector and lock it down.



19. Gently snap the new LCD into place on both sides.



20. Tuck all wires in so they don't protrude and insert the chassis back into the metal housing. Be very careful as you do this. In order for the logic board to clear, you might have to tilt it down halfway through the insertion process. Also, be careful the LCD seal does not get stuck on the clear housing window.



21. Carefully plug the ribbon cable back into the logic board.



22. Insert the metal bracket (adhesive side out) back into the grooves on the bottom. Repeat the initial step of prying down on each corner to lock the bracket back into the top grooves.



23. Reattach the plastic cover. Take note that it must be inserted in a specific way. Line up the cut out piece on the plastic cover with the metal clips on the connector inside the chassis.



24. Reattach the screws to the top of the chassis and insert the plastic cover w/ hold switch, lining it up with the hold switch in the logic board. Turn the hold switch off and the iPod on. You're done!

Thank You For Choosing FastMac.

iPod Mini



Visit FastMac.com For More Products!