

How To Install Bluetooth For Your Mac mini



PLEASE PRINT OUT A COPY OF THE MANUAL BEFORE INSTALLATION

For Customer Service and Technical Support
email: support@fastmac.com or phone: 408.850.6232





Stage 1: Setting Up Tools

Thank you for choosing FastMac. If you need any further assistance installing your Bluetooth for your Mac mini, feel free to contact us through email support@fastmac.com or by phone (408) 850-6232.



1. Layout the provided tools and a No. 1 Philips screw driver as well as a No. 00 Philips screwdriver.



2. Place the Mac mini onto a soft surface (i.e. a towel). Turn the Mac Mini over



3. Insert the provided razor blade in between the Mac mini case and the metal housing. Gently push the razor blade to one side.



4. Insert the provided case opening tool in the space created by the razor blade.

Stage 2: Removing The Components



5. Remove the razor blade and bend the tool slowly to the right while holding down the Mac mini with your left hand.



6. The chassis should pop up slightly.



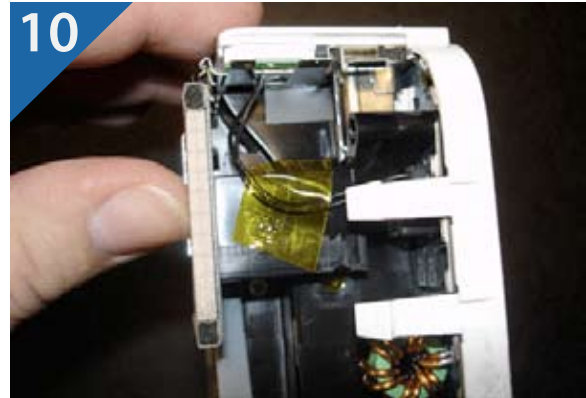
7. Slowly work your way around the entire Mac mini until all sides are disengaged from the plastic holders.



8. Gently grab underneath the chassis with both hands and lift up while pushing down on the metal casing with your thumbs.



9. Set the metal shell and the towel aside. Turn the chassis so the optical drive label is facing up. Locate the three screws as shown in the picture and remove them.



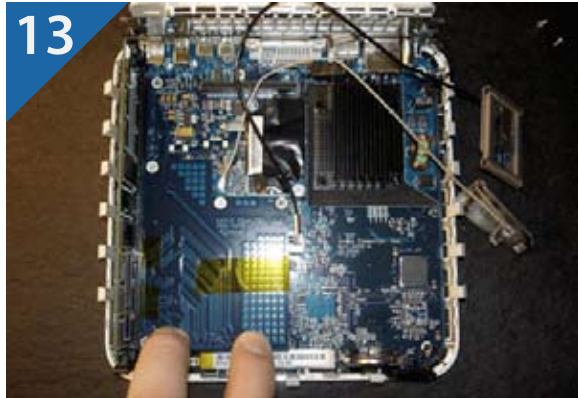
10. Remove the kapton tape from the power button cable on the upper right-hand side.



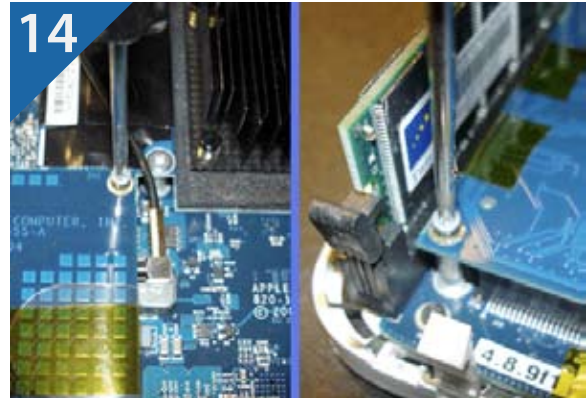
11. Grab both sides of the chassis and lift straight up. Be sure to move the cable aside where you removed the tape. Set the chassis aside.



12. Remove the Mac mini Bluetooth Module Upgrade Kit from it's packaging.



13. Insert the mezzanine board into the slot on the logic board while lining up the screw holes. Press down gently to lock into place.



14. Use the provided screws to fasten the kit to the logic board.



15. Place the chassis back into place, routing the antenna cables through the rear part of the chassis. Be sure not to pinch the power button cable on the right-hand side. Re-attach the Kapton tape to secure the power button cable to the plastic frame.

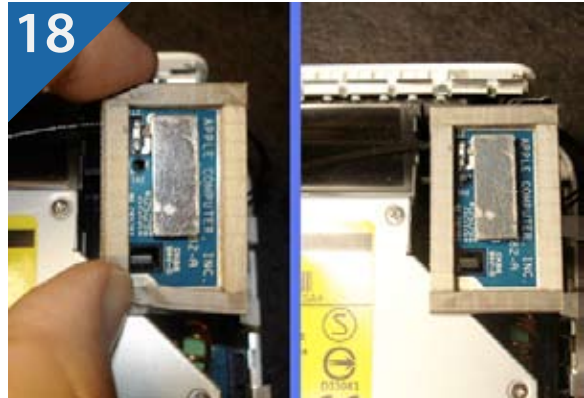


16. Ensure the antenna cables are not pinched before seating the chassis back onto the logic board.

Stage 5: Securing Bluetooth



17. Locate the smaller antenna board (Bluetooth) and insert the metal fin in between the black plastic chassis and the optical drive (there is a small slot for this purpose).



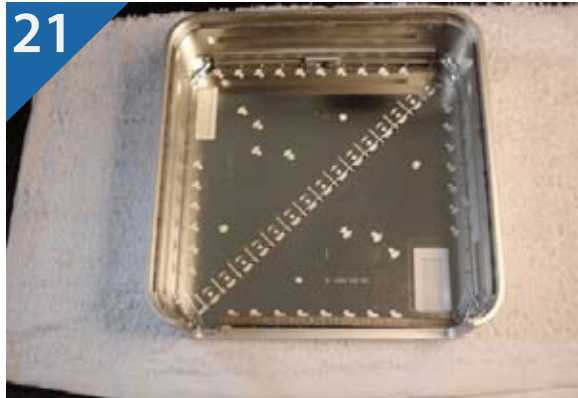
18. Locate the larger antenna board (802.11 b/g) and insert the board into the frame area as shown in the picture. It should lock into place.



19. Place a small piece of scotch tape to hold each antenna in place.



20. Reinsert the three screws for the chassis. Note: you might need to temporarily lift up the 802.11 b/g antenna to gain access to the screw hole. Simply reattach when done.



21. Set the chassis aside. Layout the towel and place the top cover in front of you as shown in the picture.



22. Line up the chassis with the rear part of the top case making sure it is seated all the way on the bottom edge.



23. Push down firmly on the back end of the chassis to lock the top case into place. If you have difficulty with this, ensure the back edge of the chassis and the top case are completely seated before pushing the top end down.



24. Turn the Mac mini over. Your done!



Stage 7: Job Complete and Enjoy!

Thank You For Choosing FastMac.

 **Bluetooth[®]**



Visit FastMac.com For More Products!