

How To Install Your LCD Screen

iPod Nano



PLEASE PRINT OUT A COPY OF THE MANUAL BEFORE INSTALLATION

For Customer Service and Technical Support
email: support6@fastmac.com or phone: 408.850.6232



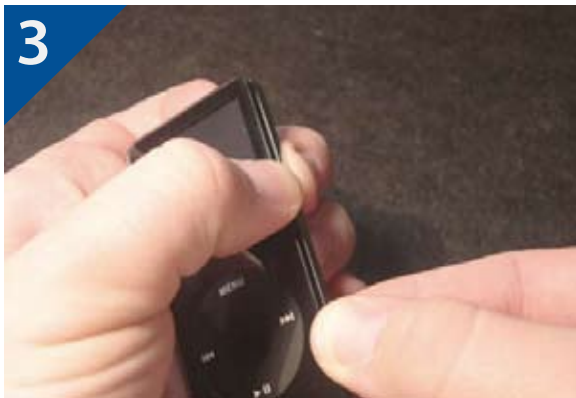
Thank you for choosing FastMac. Please feel free to contact us at any time with any questions or comments you may have while installing your LCD Screen. Let's begin.



1. Lay out the tools provide in the packaging.



2. Press and hold the play/pause button to place the iPod in sleep mode. Locate the hold switch on top of the iPod and turn to the on (orange) position.



3. Begin by holding the iPod in your left hand. While pressing down with your thumbs, pull the bottom case firmly to the opposite direction. This will cause a slight gap to appear between the metal backing and the acrylic top case.



4. Insert the edge of the larger tool into the gap you've created.

Stage 2: Removing Hard Drive



5. Slowly work your way around the edges of the iPod while pressing in slightly. You may also twist the tool as you work your way around to release the tabs. Be careful when using the plastic tool around the top and bottom of the iPod. These areas contact very delicate components.



6. Once the backing has been released set it aside.



7. Locate the 3 Phillips screws .



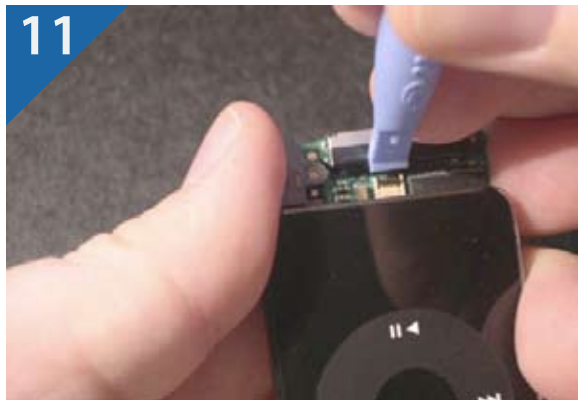
8. Remove the screw closest to the battery.



9. Locate the screw on the opposite side. Notice that it is covered with Kapton tape and a small EMI pad. You will need to remove this before proceeding. Set this aside, as you will need it later after replacing the LCD. Remove this screw and the screw below it.



10. Using the round handled nylon tool, insert the edge between the battery and the front faceplate and gently pry up.



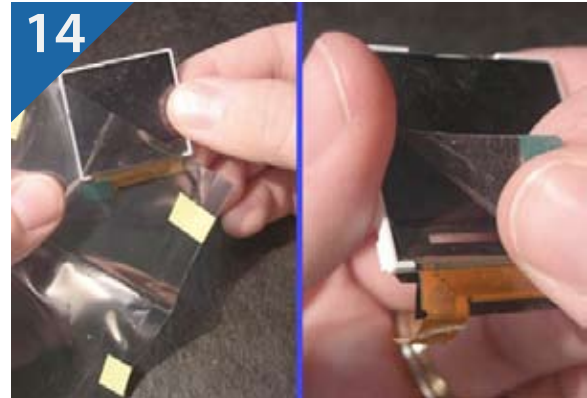
11. Flip the iPod over and turn it with the LCD facing towards you. Gently lift the faceplate slightly and slide it towards you to reveal the trackpad connector. Using the small rounded tool, flip the small brown lever up. Disconnect the cable.



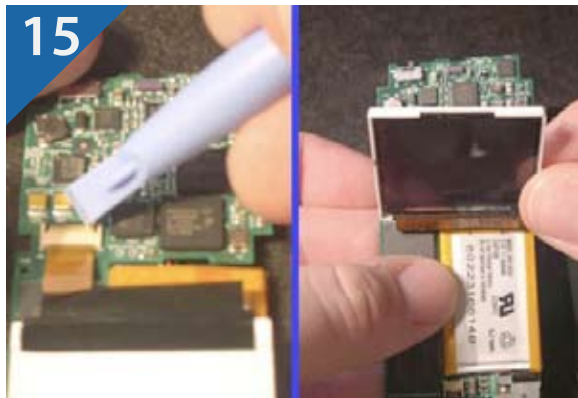
12. Using the small rounded tool, carefully insert the edge underneath the black plastic sheeting. Gently pry up the LCD while slightly twisting the tool. This part is difficult, so be patient.



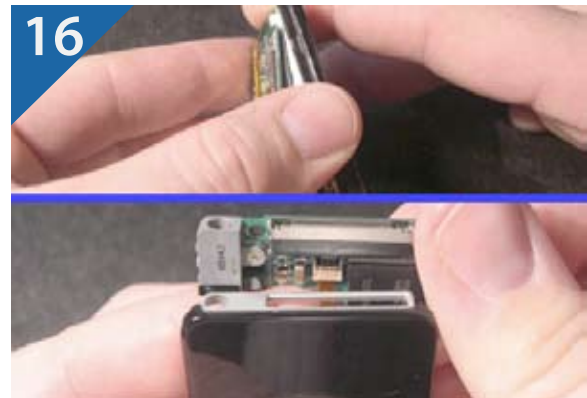
13. Lay the unit down as shown, then flip the LCD onto its face. Using the small rounded nylon tool, flip the lever up then remove the ribbon cable. Set the broken LCD aside.



14. Remove the new LCD from its packaging. Peel the protective sheeting off the new LCD.



15. Insert the new LCD ribbon cable into place. Lock the lever down. Lay the LCD back over



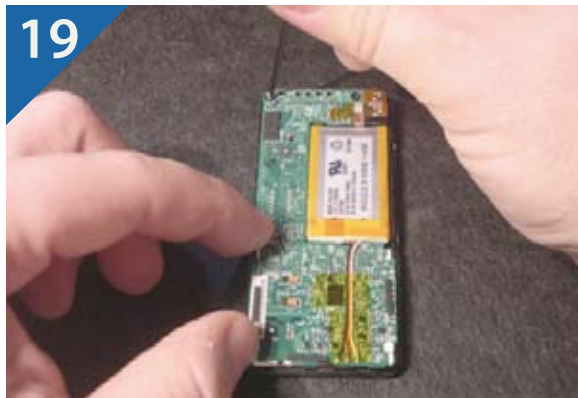
16. This part is very difficult, so have patience when doing this. Insert the logic board (LCD side), into the plastic tabs of the LCD. Turn the iPod over and carefully insert the trackpad cable into the connector. Use your index finger of your other hand to guide the cable into place. This will take some time to do, which you can spend reflecting on your decision not to opt for the professional install.



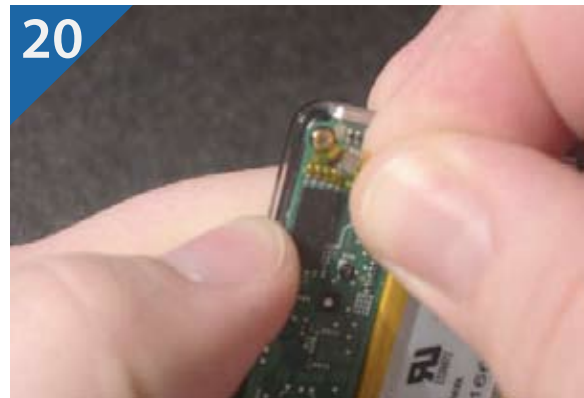
17. Gently slide the logic board into place in the direction shown, but be careful with the LCD tabs. You will need to work with it, but it will lock into place.



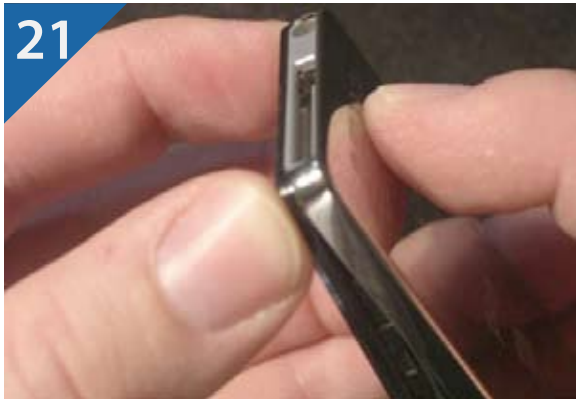
18. Place the battery back into position once the logic board is in place.



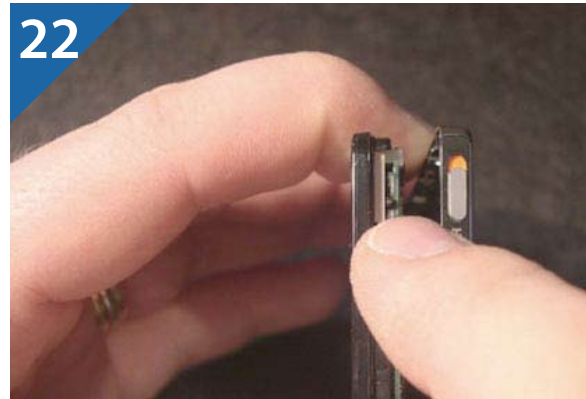
19. Start with the screw in the upper left-hand corner. NOTE: There are 2 different types of screws, in case you didn't keep track. The one large threaded screw goes below this one. The other two are identical. Finish attaching the remaining screws.



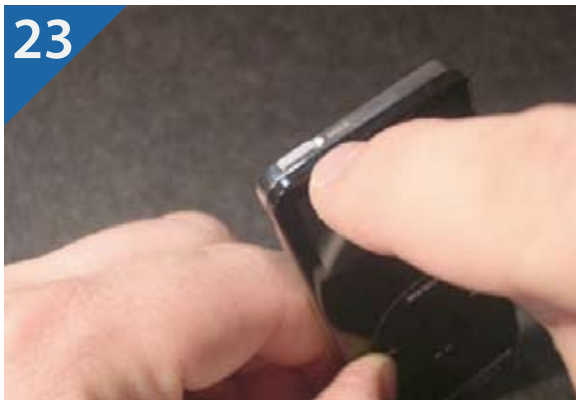
20. Reattach the Kapton tape and EMI pad.



21. Begin closing the back case starting with the connector side.



22. Be careful on the hold switch side! The position of the switch must match the position of the sliding switch on the back case.



23. Once the case is closed, turn the hold switch on.



24. Press the play/pause button and/or the center select button to turn your iPod back on. You're done!

Thank You For Choosing FastMac.

iPod Nano



Visit FastMac.com For More Products!