

Thank you for purchasing the TruePower U-Charge Universal Battery Charger. U-Charge simplifies the battery charging process for those who have more than one battery or more than one type of laptop. It connects directly to the terminals of various models of Apple laptop batteries to recharge them quickly & efficiently. Unlike other external battery chargers that are bulky & powered by higher wattage AC adapters, the energy efficient U-Charge supplies exactly the power needed to charge only the battery, bypassing the need to power the laptop. Its battery charge indicator LEDs (similar to those found on Apple batteries) let you quickly determine the charge status & battery level, even if your battery is not calibrated. Portable & versatile, U-Charge saves you time & energy and keeps you powered on the go. To get the most out of your U-Charge, please read this manual & don't forget to register your product at <http://fastmac.com/register>

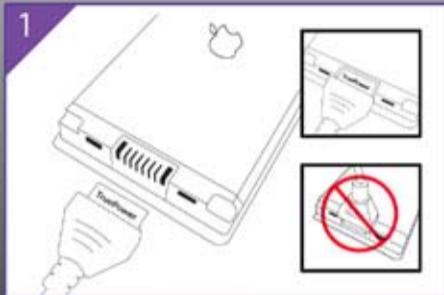
- 1 iBook Clamshell, iBook G3/ G4 14-inch & PowerBook G4 Titanium have 14.4V batteries, which can be recharged with a 14.4V U-Charge (sold separately).
- 2 The U-Charge is a fixed-voltage direct-connect battery charger that can only be used to recharge batteries that share the same voltage setting as printed on the label.
- 3 Since the battery will be lying face down on a flat surface, you will not be able to see the progress of the charge indicator LEDs as the battery charges to full capacity.

U-Charge Guide

10.8V



TM and © 2008 FastMac. All rights reserved.
All other brand names & trademarks belong
to their respective owners.
Patent Pending.



Before you begin, compare the voltage on your battery (most Apple laptops have 10.8V batteries¹) with the output voltage of the U-Charge as printed on its label: they must match². Once the voltage match is confirmed, place your battery face down (label side facing up) on a flat surface and horizontally attach the 6-pin battery connector cable directly to the battery terminals. Make sure that all pins are connected & in contact with the battery terminals. Do NOT attach the battery connector cable vertically as this will reverse the polarity & damage your battery.



When the U-Charge is plugged in & receiving power (and your laptop battery is connected properly), its charge status LED will glow red to indicate that the battery is charging. In addition, the charge indicator LEDs on the battery will flash in sequence from left to right as the battery charges³. When the battery is fully charged, the status LED will change color from red to green and the charge indicator LEDs on the battery will stop flashing. The charge indicator LEDs on the U-Charge will NOT flash or light up in sequence when the battery is charging.



In addition to being a portable battery charger, the U-Charge can also be used as a battery tester. The battery charge indicator LEDs, which are similar to those found on Apple batteries, can independently indicate the charge status and level, even when the battery has lost its calibration or the lights are not functioning. To test a battery's charge level, unplug the U-Charge from the AC mains & attach the battery connector cable directly to the battery- the charge indicator LEDs will light up & display battery capacity.